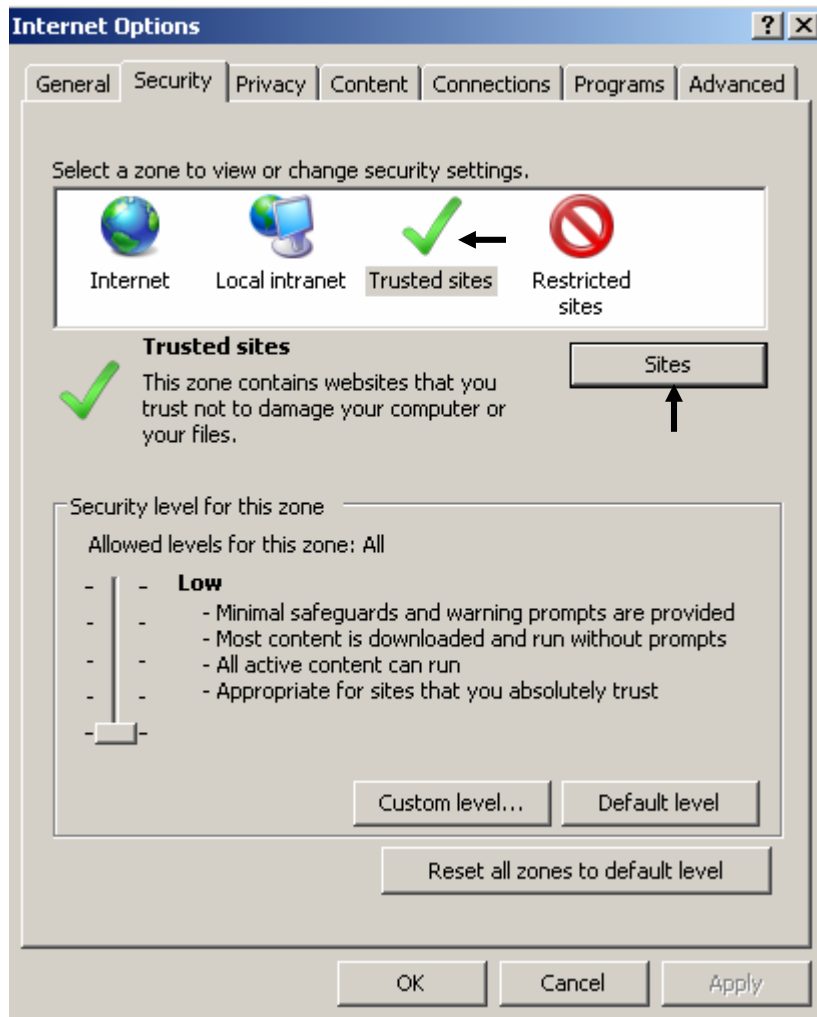


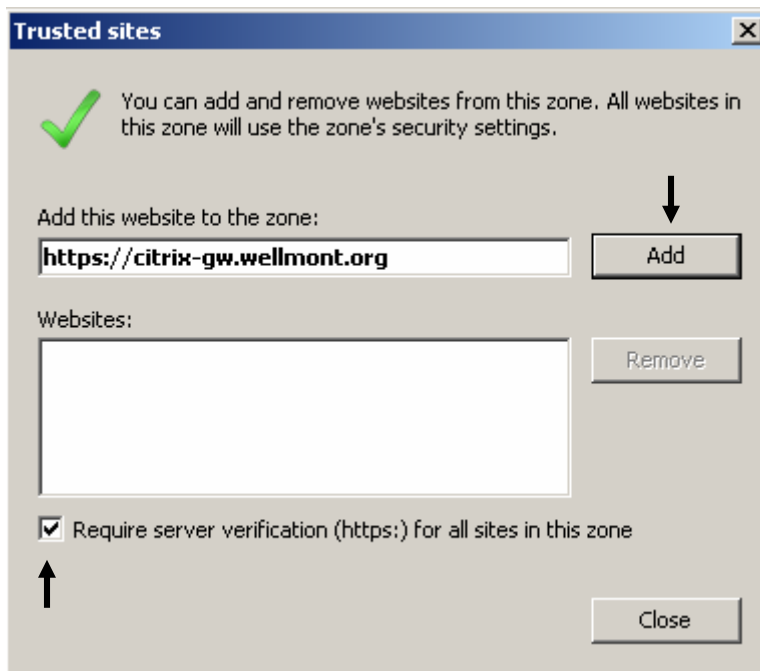
## Citrix Remote Access Client Install

1. Add <https://citrix-gw.wellmont.org> to trusted sites by performing the following steps.

- Launch Internet Explorer
- From the Internet Explorer Tools menu, select Internet Options.
- Click the Security tab.
- Select trusted sites and click Sites.

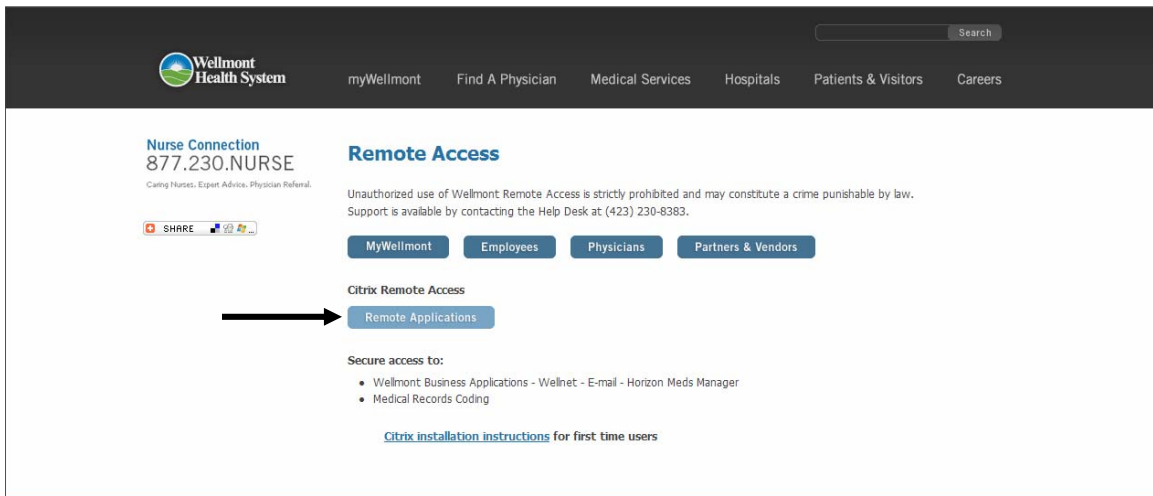


- Type the URL of the Web server in the Add this Web site to the zone box. URL is **https://citrix-gw.wellmont.org**
- Click Add to add the Web site to your list of trusted sites.

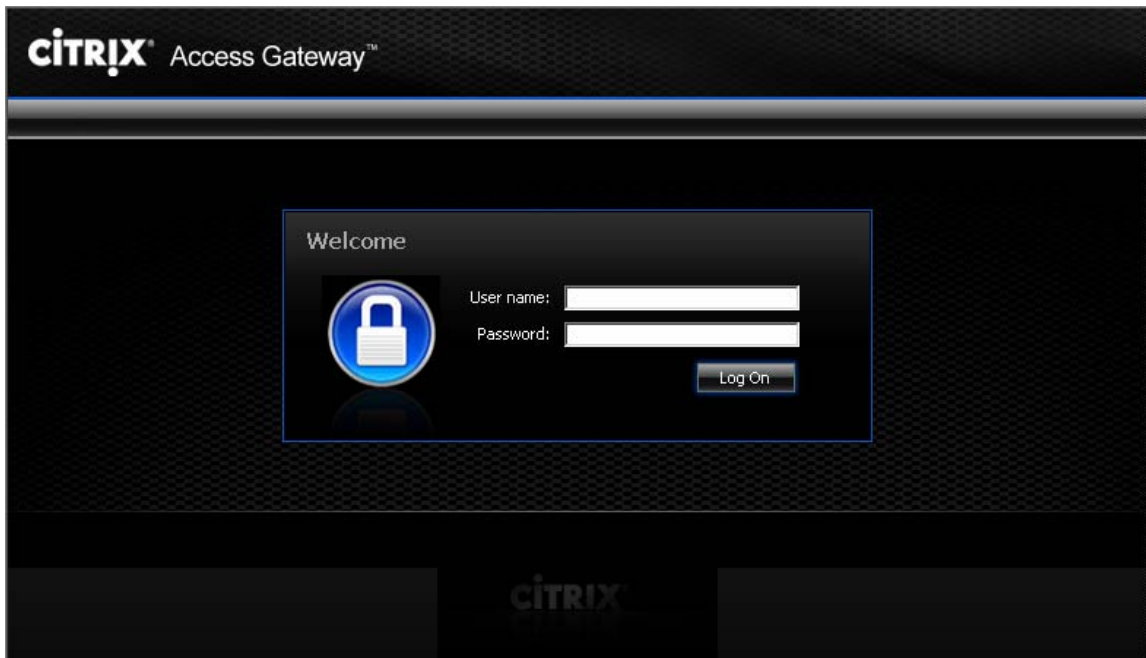


2. Open Internet Explorer and enter the following URL. [www.wellmont.org](http://www.wellmont.org)
3. Select Login located at the bottom of the screen.

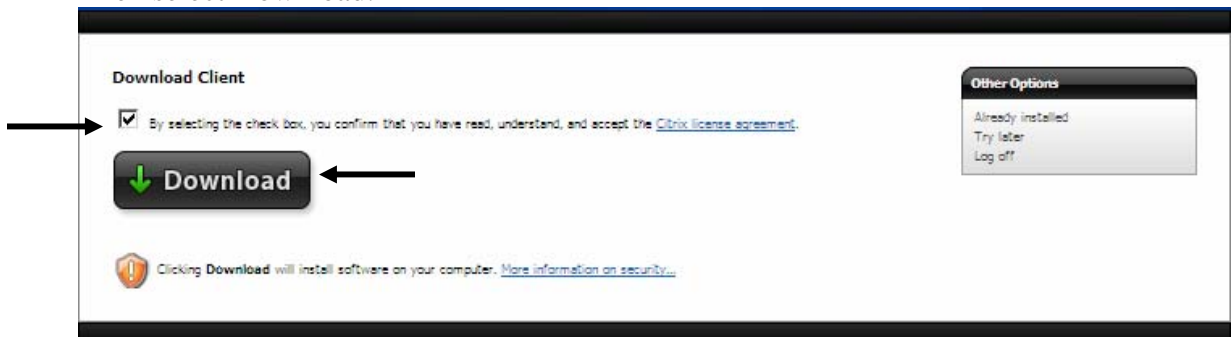
4. Click on Remote Applications.



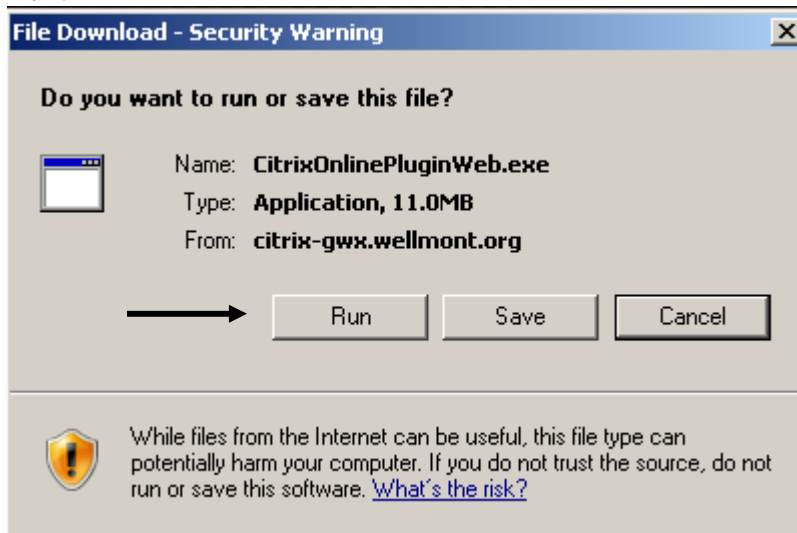
5. The following login screen will appear.



6. Please use Wellmont supplied username and password
7. Please put a checkmark in the checkbox beside "By selecting the check box, you confirm that you have read, understand, and accept the Citrix license agreement." Then select Download.



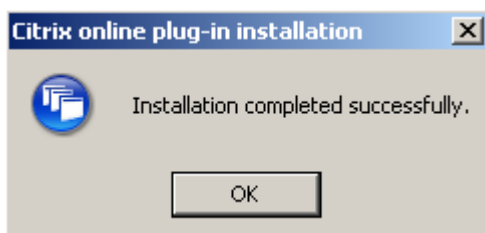
8. The next screen will prompt for File Download – Security Warning. Please select Run.



9. The next screen will prompt for Internet Explorer – Security Warning. Please select Run.



10. The following message will appear after a successful installation. Please click OK.



10. Close and Re-open Internet Explorer.